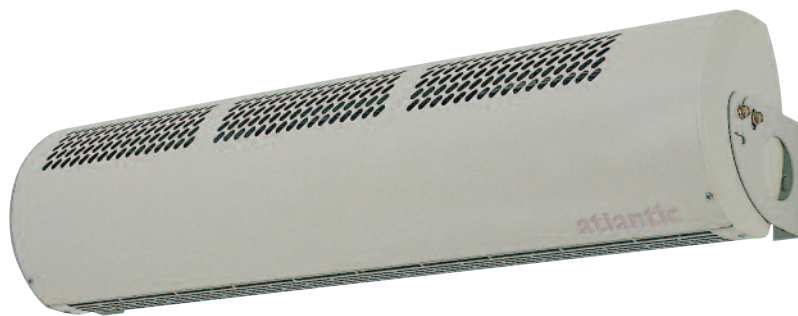


ELECTRIC HEATERS

Air Lock Visible

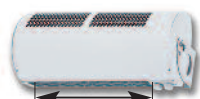


FRENCH TECHNOLOGY 



(2/4 kW, 3/6kW, 5/10kW) - wall-mounting

VISIBLE MODELS



(65 cm) Air Lock 2/4



(90 cm) Air Lock 3/6



(110 cm) Air Lock 5/10

AIR CURTAINS

Visible models				Wall-mounting			Ceiling-mounting		
Power (kW)	Voltage (V)	Air flow (m ³ /h)	Weight (kg)	Length (mm)	Height (mm)	Width (mm)	Length (mm)	Height (mm)	Width (mm)
2/4	230 V ⁿ	180/260	7.5	650	208	175	650	225	150
3/6	230 V ⁿ /400 V 3N	260/390	10.2	900	208	175	900	225	150
5/10	400 V ⁿ 3N	950/1350	24	1105	292	259	1105	318	229

Accessories

Control unit (alone) for 3/6 kW visible models

Control unit (alone) for 5/10 kW visible models

CE Classe I IP 20

ACCESSORIES

- **Control unit** (for 3/6 kW visible model):
Temperature regulation knob 6-position switch:
 - Low-speed air blowing, fan-only mode
 - High-speed air blowing, fan-only mode
 - Half-power heating, low-speed air blowing
 - Half-power heating, high-speed air blowing
 - Full power heating, high-speed air blowing
 - Off
- **Control unit** (for 5/10 kW visible model): 6-position switch:
 - Low-speed air blowing, fan-only mode
 - High-speed air blowing, fan-only mode
 - Half-power heating, low-speed air blowing
 - Half-power heating, high-speed air blowing
 - Full power heating, high-speed air blowing
 - Off

